

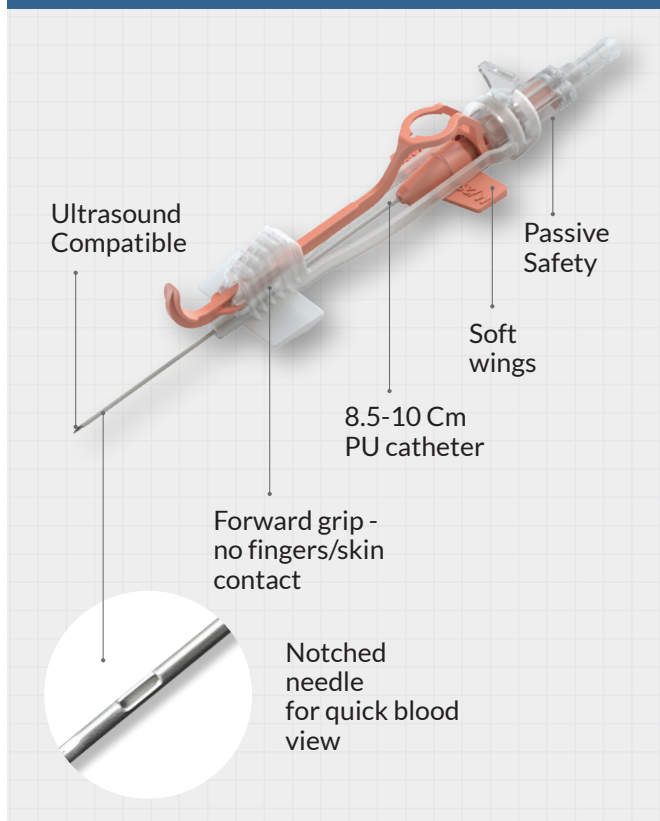
# Meet the *M/29* Bullpup™

Midline Insertion with the simplicity  
of an IV cannula

## PATENTED OVER-THE-NEEDLE INSERTION SYSTEM

Patented design increase control and reduce contact between catheter, hands and skin, the M/29 Bullpup™ is the ideal solution for patients receiving or expected to receive peripheral IV therapy for more than 48 hours.

The M/29 Bullpup™ Mini-midline reduces multiple catheter replacements and re-starts - for increased patient satisfaction and significant cost savings.



\* US and worldwide patents

## KEY ADVANTAGES

- **8.5-10 cm Catheter - Increased Stability, Ensure Central Tip Positioning\***  
Deep vein access, drug release away from puncture wound
- **Inserted similar to a standard IV cannula**  
Over the needle insertion - simplified training
- **Unique Forward Grip Introducer**  
Controlled, near entry point grip, hand is elevated, No skin contact
- Lowest IV access cost in the market
- Reduces the need for catheter restarts and associated needle sticks
- High patient satisfactions
- Soft wings for enhanced stabilization
- Deep vein access
- Compatible with most major sutureless devices
- **Category:** Safety, Mini-midline IV catheter
- **Clinical indication:** IV access up to 29 days
- **Insertion time:** < 1 minute
- **Gauge:** 18-22G
- **Pressure:** Rated up to 325 PSI
- **Ultrasound compatible**
- **Notched needle for quick blood view**
- **Material:** PU



Reference Number	Product name	Color Code	Gauge Size	Catheter Length	Power Injection	Catheter I.D / O.D (mm)	Unit Box
45224520LY	M/29 Bullpup 22G ported	Blue	22G	7.9 cm	325 psi	Ø0.62 / Ø0.90	25
10224620FY	M/29 Catheter 22G	Blue	22G	8.5 cm	325 psi	Ø0.62 / Ø0.90	25
09205820FD	M/29 Catheter 20G Ported	Pink	20G	7.9 cm	325 psi	Ø0.78 / Ø1.10	25
10205920FY	M/29 Catheter 20G	Pink	20G	8.5 cm	325 psi	Ø0.78 / Ø1.10	25
09186920FD	M/29 Catheter 18G Ported	Green	18G	7.9 cm	325 psi	Ø0.95 / Ø1.30	25
10187020FY	M/29 Catheter 18G	Green	18G	8.5 cm	325 psi	Ø0.95 / Ø1.30	25
46187420FY	M/29 Catheter 18GL	Green	18G	9.8 cm	325 psi	Ø0.95 / Ø1.30	25

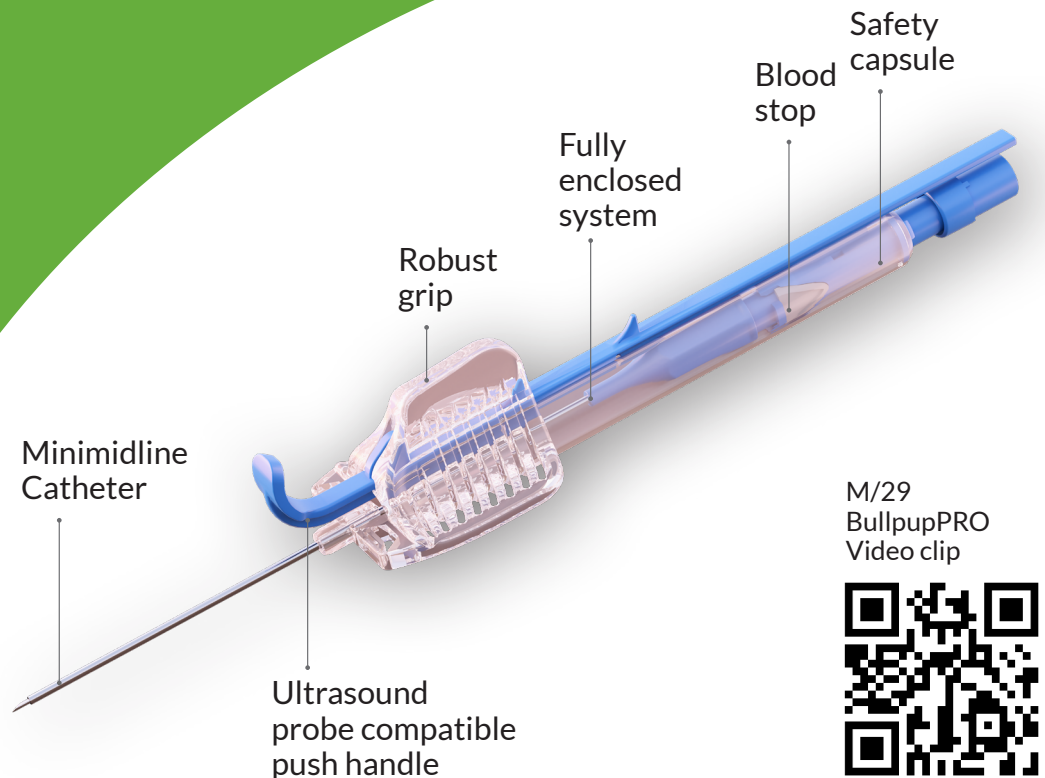
# COMING SOON

## OUR NEXT GENERATION

# M/29 Bullpup™ PRO

### ALL NEW, PATENTED FEATURES:

- One-handed operation
- Bloodless insertion
- Ultrasound probe compatible push handle
- Solid one-piece frame
- Enlarged Robust grip
- Fully enclosed system
- Simplified training



M/29  
BullpupPRO  
Video clip

